

# Massachusetts Restructuring Roundtable

*Bracing for Storms in New England*

Marcy L. Reed, President, MA

National Grid

December 21, 2012

# Irene

---

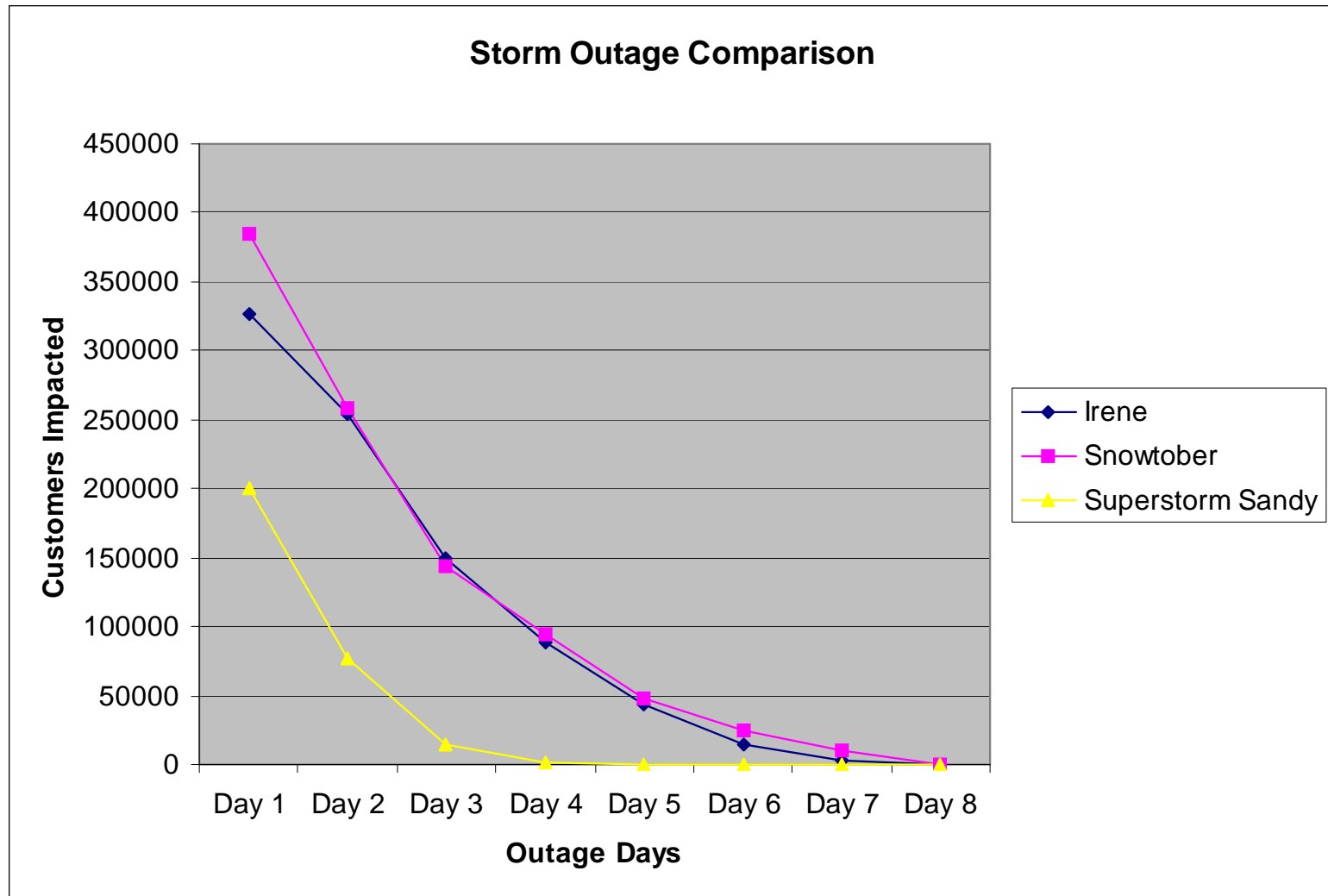


# Sandy

---



# Major storms since August 2011



# Reliability Enhancement Program

- Targeted asset replacement with defined expected reliability improvement
- Addition of over 300 reclosers
- Enhanced Hazard Tree removal

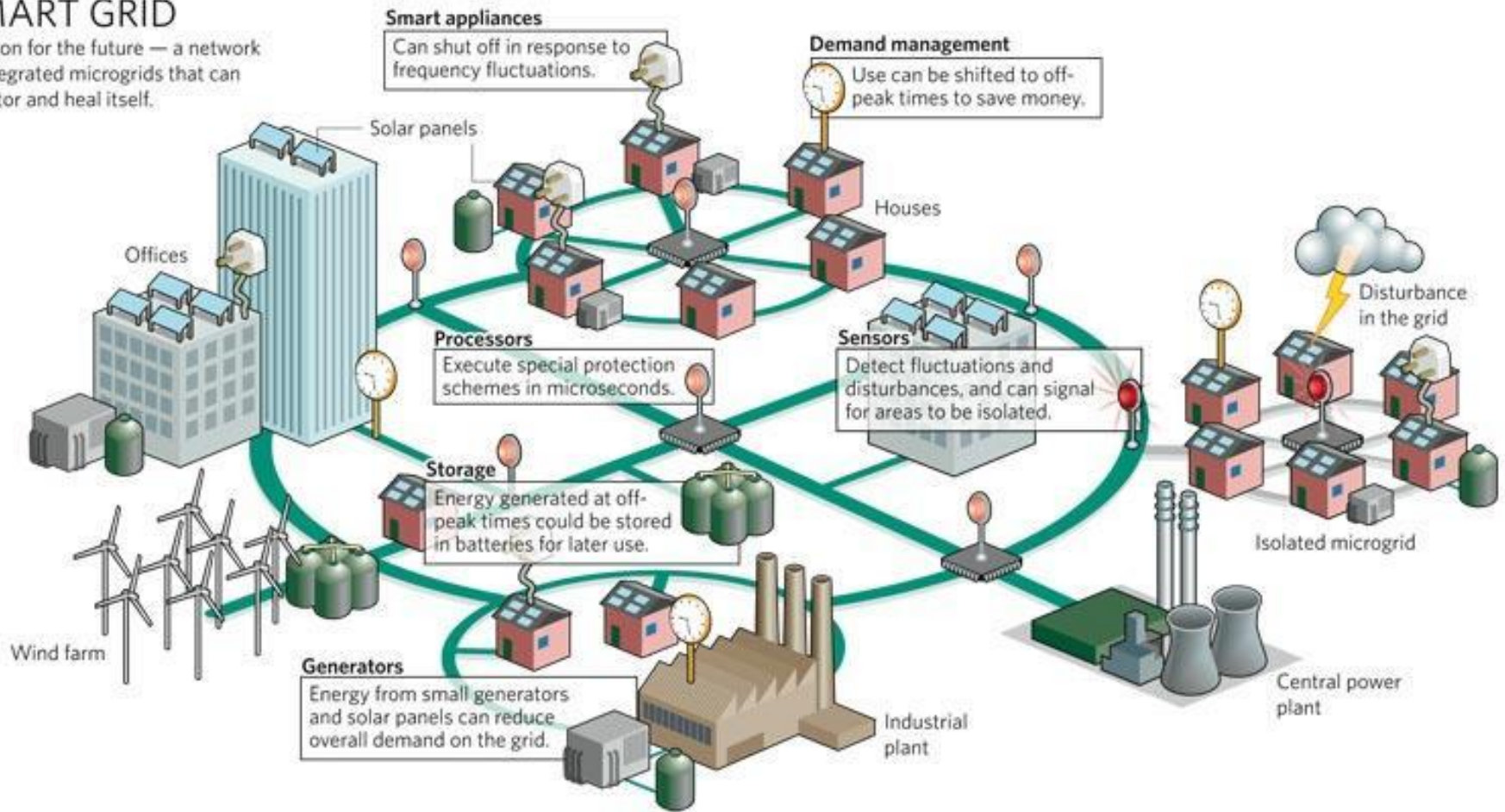




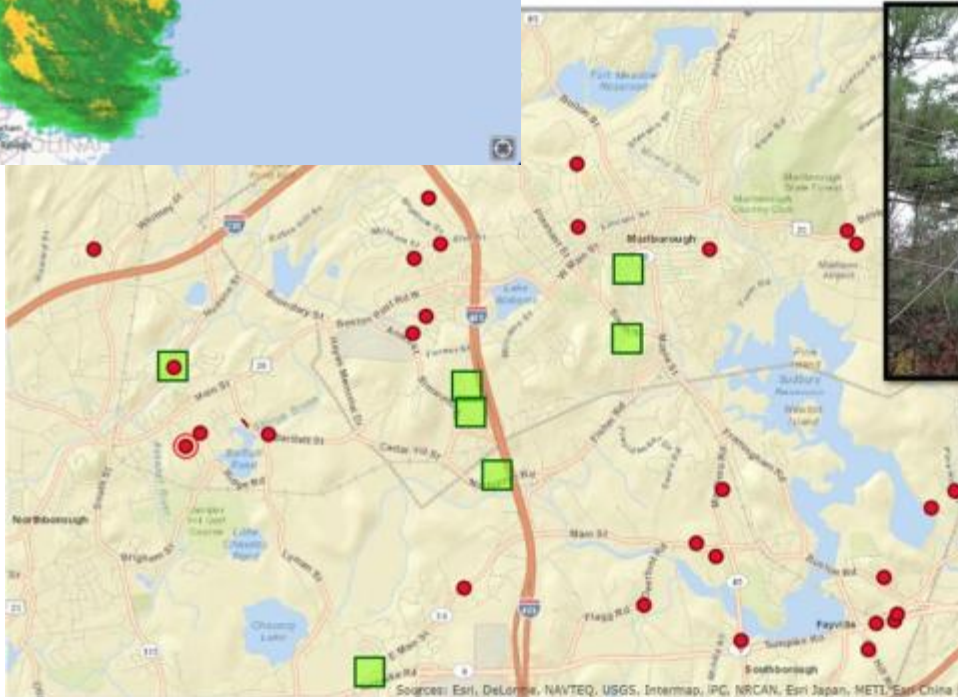
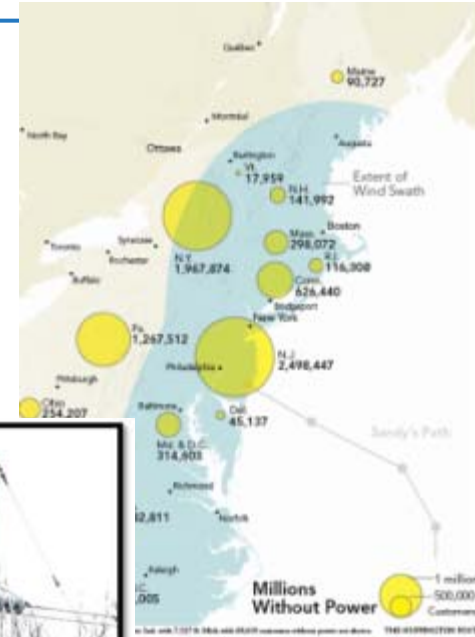
# The Age of Convergence

## SMART GRID

A vision for the future — a network of integrated microgrids that can monitor and heal itself.

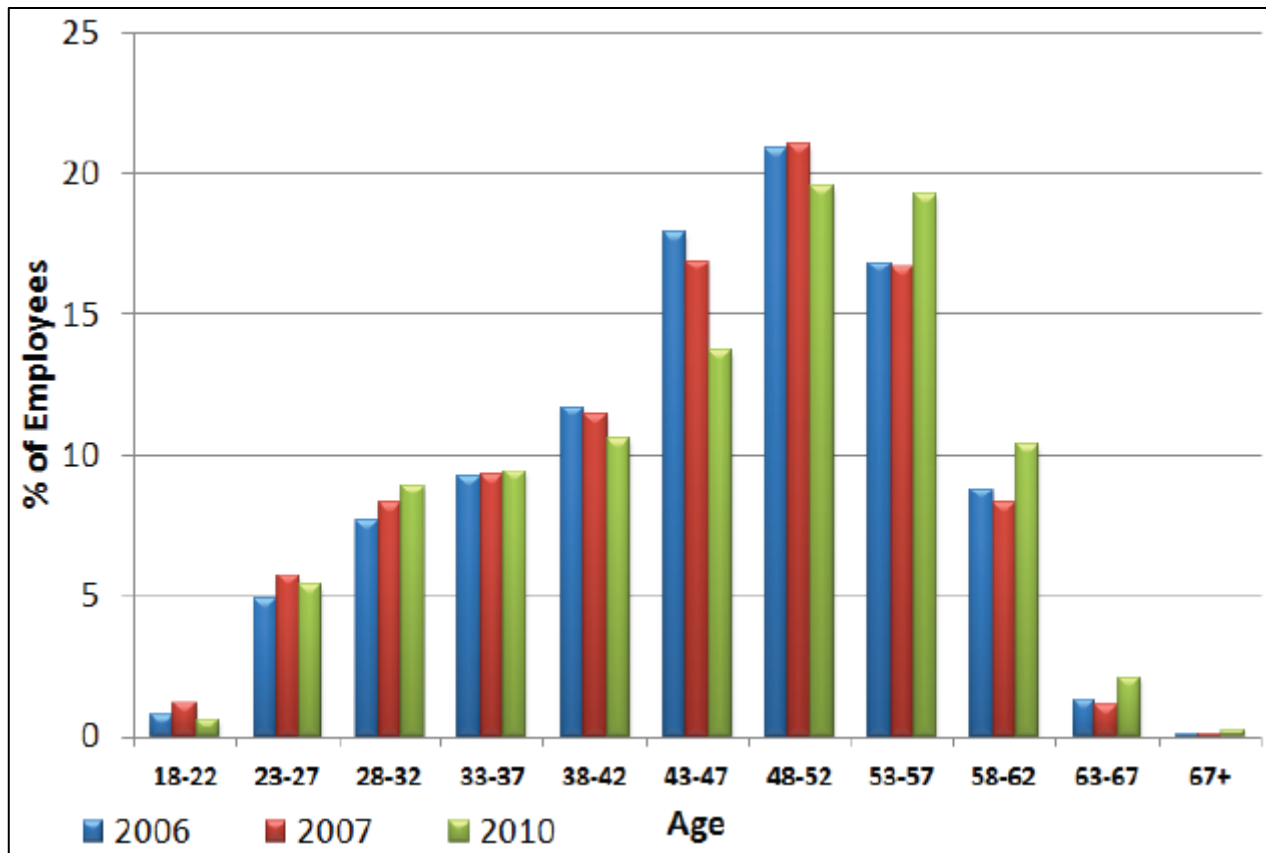


# New technology provides better information



# We're Not Getting Any Younger

Age Distribution  
Electric and Natural Gas Utilities





# STEM Education - Building the Future Workforce



# An Opportunity to Review Policy

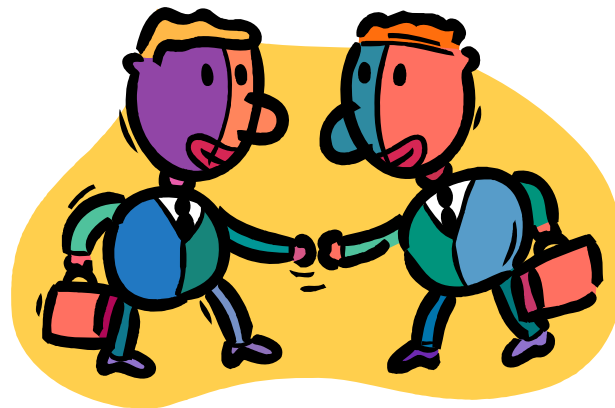
---



Partners



Rules



Customers

# Start with the Customer and Work Backwards

---



<http://www.nuritelecom.com/solutions/smart-grid.html>

# The Cost of Electricity About Equal to a Cup of Coffee ...

nationalgrid

## 2011 Daily Cost of Electricity – NG Basic Service Customers

	All Homes	Low Income	Electric Heat
<b>MA</b>	\$2.88 (642 kWh/mo)	\$2.01 (575 kWh/mo)	\$4.64 (878 kWh/mo)



**Cost of Dunkin Donuts “Great One” Coffee: \$2.62**



## Questions for consideration

---

- How fast do we modernize the grid?
- What technologies deliver the biggest value for our customers?
- Can we reshape the future workforce?
- Who pays for the modern grid and at what price?
- What regulatory framework changes might we envision?
- All of these questions must be evaluated with customers' evolving expectations at the forefront of the discussion.